

# BBand Startup ver. 10.5.20

## 1. First Five Notes • (Two-part Round)

B $\flat$  C D E $\flat$  F

A musical staff in 4/4 time with a key signature of two flats (Bb and Eb). It contains five measures, each with a single half note: Bb, C, D, E $\flat$ , and F.

## 2. Third Note

D (Rest)

1 2 3 4 (1 2 3 4)

A musical staff in 4/4 time with a key signature of two flats. It contains eight measures. The first measure has a half note D. The second measure has a whole rest. The third measure has a half note D. The fourth measure has a whole rest. The fifth measure has a half note D. The sixth measure has a whole rest. The seventh measure has a half note D. The eighth measure has a whole rest. Below the staff, the numbers '1 2 3 4' are written under the first measure, and '(1 2 3 4)' is written under the second measure.

## 3. Second Note

C

A musical staff in 4/4 time with a key signature of two flats. It contains eight measures. The first measure has a half note C. The second measure has a whole rest. The third measure has a half note C. The fourth measure has a whole rest. The fifth measure has a half note C. The sixth measure has a whole rest. The seventh measure has a half note C. The eighth measure has a whole rest.

## 4. Back and Forth

A musical staff in 4/4 time with a key signature of two flats. It contains eight measures. The first measure has a half note C. The second measure has a whole rest. The third measure has a half note C. The fourth measure has a whole rest. The fifth measure has a half note C. The sixth measure has a whole rest. The seventh measure has a half note C. The eighth measure has a whole rest.

## 5. First Note

B $\flat$

A musical staff in 4/4 time with a key signature of two flats. It contains eight measures. The first measure has a half note B $\flat$ . The second measure has a whole rest. The third measure has a half note B $\flat$ . The fourth measure has a whole rest. The fifth measure has a half note B $\flat$ . The sixth measure has a whole rest. The seventh measure has a half note B $\flat$ . The eighth measure has a whole rest.

## 6. Movin' Around

A musical staff in 4/4 time with a key signature of two flats. It contains eight measures. The first measure has a half note C. The second measure has a whole rest. The third measure has a half note C. The fourth measure has a whole rest. The fifth measure has a half note C. The sixth measure has a whole rest. The seventh measure has a half note C. The eighth measure has a whole rest.

7. Third Note Revisited

D (Rest)

1 2 3 4 (1 2 3 4)

8. Fourth Note

Eb

9. Up and Down

G Ab Bb

10. Fifth Note

Bb C D

11. Top Three Trip

C D Eb

**BBand Startup - Half and Quarter Notes/Rests**

9a. Half Notes-Upper • Half notes and half rests get TWO counts each.



9b. Half Notes-Lower • Half notes and half rests get TWO counts each.



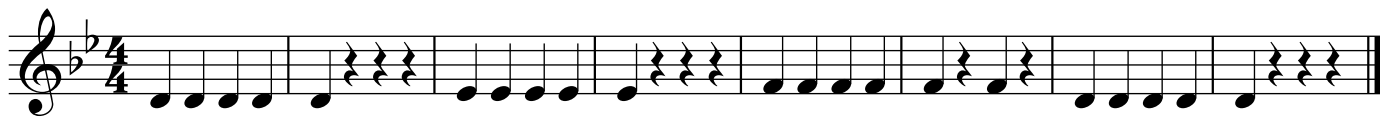
12a. Cuckoo • (Upper Part)



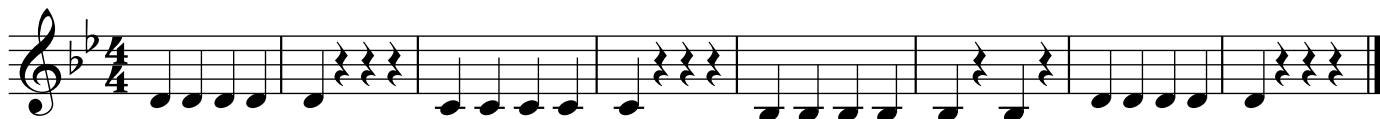
12b. Cuckoo • (Lower Part)



15a. Quarter Notes-Upper • Quarter notes and rests get ONE count each.



15b. Quarter Notes-Lower • Quarter notes and rests get ONE count each.



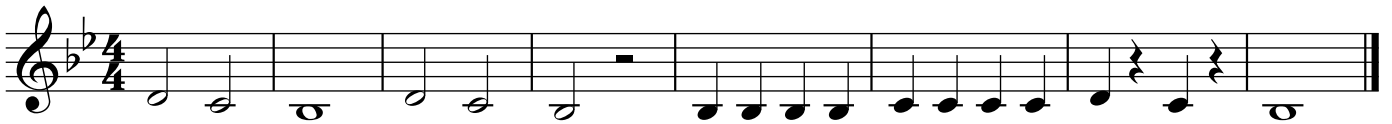
## 17a. Rain, Rain-Upper • Quarter and Half Notes



## 17b. Rain, Rain-Lower • Quarter and Half Notes



## 19. Hot Cross Buns



## 23. Merrily We Roll Along

