

Happy Birthday

Musical notation for 'Happy Birthday' in 3/4 time, key of B-flat major. The melody is written on a single staff with a treble clef. It begins with a double bar line and a repeat sign. The piece concludes with a fermata over the final note.

Jingle Bells

Musical notation for 'Jingle Bells' in 4/4 time, key of B-flat major. The melody is written on two staves with a treble clef. The first staff contains the main melody, and the second staff provides a harmonic accompaniment.

Dreidel Song

Musical notation for 'Dreidel Song' in 4/4 time, key of B-flat major. The melody is written on a single staff with a treble clef. The piece features a central measure with a whole note rest.

Ode to Joy

Musical notation for 'Ode to Joy' in 4/4 time, key of B-flat major. The melody is written on a single staff with a treble clef.

Go Team, Go!

Musical notation for 'Go Team, Go!' in 4/4 time, key of B-flat major. The melody is written on a single staff with a treble clef. The piece features a rhythmic pattern of eighth notes and rests. The final measure includes a triplet of eighth notes with accents, with the instruction '(Play either note)' written above.

Happy Birthday

Musical notation for 'Happy Birthday' in G major, 3/4 time. The melody is written on a single staff. It begins with a treble clef, a key signature of one flat (F major), and a 3/4 time signature. The piece consists of 12 measures, ending with a double bar line.

Jingle Bells

Musical notation for 'Jingle Bells' in G major, 4/4 time. The melody is written on two staves. The first staff contains the first 8 measures, and the second staff contains the remaining 8 measures. The piece ends with a double bar line.

Dreidel Song

Musical notation for 'Dreidel Song' in G major, 4/4 time. The melody is written on a single staff. It consists of 12 measures, ending with a double bar line.

Ode to Joy

Musical notation for 'Ode to Joy' in G major, 4/4 time. The melody is written on a single staff. It consists of 12 measures, ending with a double bar line.

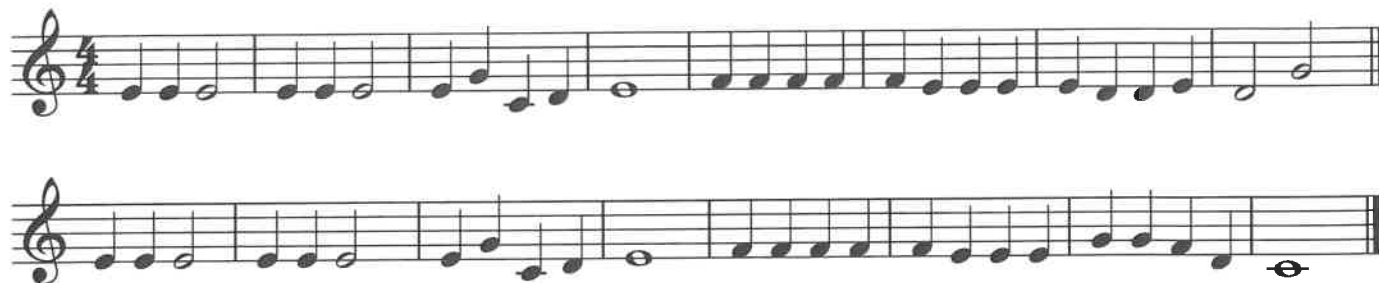
Go Team, Go!

Musical notation for 'Go Team, Go!' in G major, 4/4 time. The melody is written on a single staff. It consists of 12 measures, ending with a double bar line. The final four measures (measures 9-12) feature a rhythmic pattern of eighth notes with accents (>) above them. Above the first three notes of this pattern is the instruction "(Play either note)".

Happy Birthday



Jingle Bells



Dreidel Song



Ode to Joy



Go Team, Go!

(Play either note)



Fun Songs!

Happy Birthday

Musical notation for "Happy Birthday" in 3/4 time, G major. The melody consists of eighth and quarter notes, ending with a half note and a quarter rest.

Jingle Bells

Musical notation for "Jingle Bells" in 4/4 time, G major. The melody is written on two staves, featuring eighth and quarter notes.

Dreidel Song

Musical notation for "Dreidel Song" in 4/4 time, G major. The melody consists of quarter and eighth notes.

Ode to Joy

Musical notation for "Ode to Joy" in 4/4 time, G major. The melody consists of quarter and eighth notes.

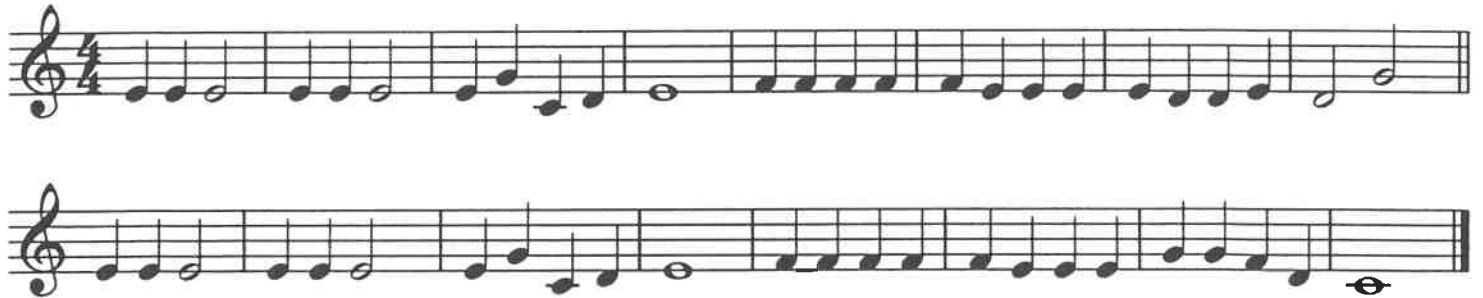
Go Team, Go!

Musical notation for "Go Team, Go!" in 4/4 time, G major. The melody consists of quarter and eighth notes. The final measure includes a triplet of eighth notes with the instruction "(Play either note)" above them.

Happy Birthday



Jingle Bells



Dreidel Song



Ode to Joy



Go Team, Go!

(Play either note)

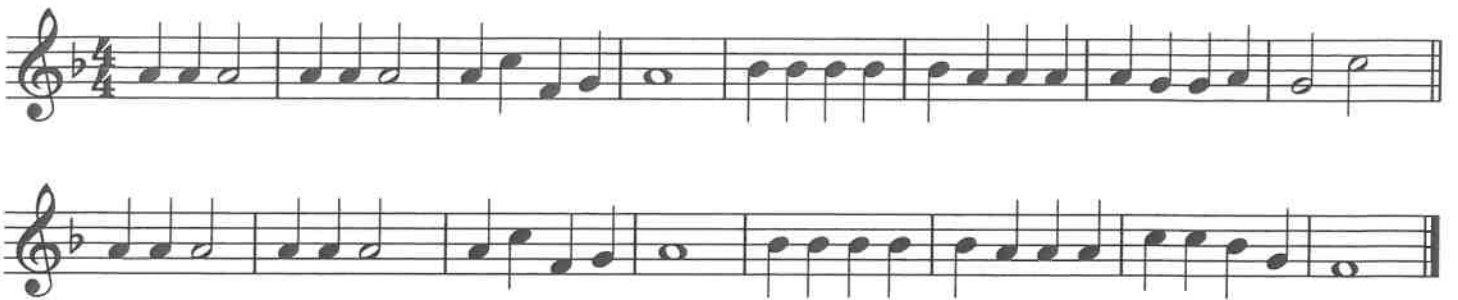


Happy Birthday



Musical notation for "Happy Birthday" in 3/4 time, key of B-flat major. The melody is written on a single staff with a treble clef and a key signature of two flats. It begins with a repeat sign and ends with a fermata over the final note.

Jingle Bells



Musical notation for "Jingle Bells" in 4/4 time, key of B-flat major. The melody is written on two staves with a treble clef and a key signature of two flats. The first staff contains the main melody, and the second staff contains a rhythmic accompaniment of eighth notes.

Dreidel Song



Musical notation for "Dreidel Song" in 4/4 time, key of B-flat major. The melody is written on a single staff with a treble clef and a key signature of two flats. It features a simple, repetitive melody with a repeat sign at the beginning.

Ode to Joy



Musical notation for "Ode to Joy" in 4/4 time, key of B-flat major. The melody is written on a single staff with a treble clef and a key signature of two flats. It consists of a single line of music with a repeat sign at the end.

Go Team, Go!

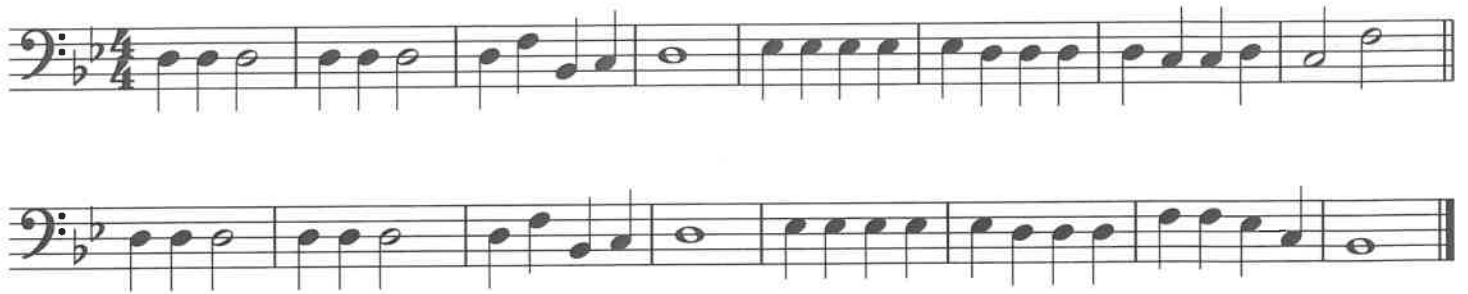


Musical notation for "Go Team, Go!" in 4/4 time, key of B-flat major. The melody is written on a single staff with a treble clef and a key signature of two flats. It features a rhythmic pattern of eighth notes and rests. The final measure includes a triplet of eighth notes with the instruction "(Play either note)" above them.

Happy Birthday



Jingle Bells



Dreidel Song



Ode to Joy



Go Team, Go!



Happy Birthday



Musical notation for the tuba part of 'Happy Birthday'. The key signature has two flats (B-flat and E-flat), and the time signature is 3/4. The melody is written in the bass clef and consists of a series of eighth and quarter notes.

Jingle Bells

Musical notation for the tuba part of 'Jingle Bells'. The key signature has two flats (B-flat and E-flat), and the time signature is 4/4. The melody is written in the bass clef and consists of a series of eighth and quarter notes.

Dreidel Song

Musical notation for the tuba part of 'Dreidel Song'. The key signature has two flats (B-flat and E-flat), and the time signature is 4/4. The melody is written in the bass clef and consists of a series of eighth and quarter notes.

Ode to Joy

Musical notation for the tuba part of 'Ode to Joy'. The key signature has two flats (B-flat and E-flat), and the time signature is 4/4. The melody is written in the bass clef and consists of a series of eighth and quarter notes.

Go Team, Go!

(Play either note)

Musical notation for the tuba part of 'Go Team, Go!'. The key signature has two flats (B-flat and E-flat), and the time signature is 4/4. The melody is written in the bass clef and consists of a series of eighth and quarter notes. The final measure contains a triplet of eighth notes with 'v' marks below them.

