


PentaScale

mf


1 Chorale

p *f*

mp *rit.* *p*

Dynamics (Volume)*pp*-pianissimo (very soft)*p* = piano (soft)*mp*-mezzo piano (medium soft)*mf*-mezzo forte (medium loud)*f*-forte (loud)*ff*-fortissimo (very loud)crescendo-(grow louder) 

decrescendo or

diminuendo-(grow softer) **Musical Terms***rit.*-ritardando (slowing down)fermata  -hold note longer

(director will cut you off)

PentaScale and Chorale

PentaScale 2 3 4 5

1 Chorale 2 3 4

5 6 7 8

Dynamics (Volume)

pp-pianissimo (very soft)

p = piano (soft)

mp-mezzo piano (medium soft)

mf-mezzo forte (medium loud)

f-forte (loud)

ff-fortissimo (very loud)

crescendo-(grow louder)

decrescendo or

diminuendo-(grow softer)

Musical Terms

rit.-ritardando (slowing down)

fermata -hold note longer

(director will cut you off)

PentaScale and Chorale

PentaScale 2 3 4 5

1 Chorale 2 3 4

5 6 7 8

Dynamics (Volume)

- pp*-pianissimo (very soft)
- p* = piano (soft)
- mp*-mezzo piano (medium soft)
- mf*-mezzo forte (medium loud)
- f*-forte (loud)
- ff*-fortissimo (very loud)
- crescendo-(grow louder)
- decrescendo or
- diminuendo-(grow softer)

Musical Terms

- rit.*-ritardando (slowing down)
- fermata -hold note longer
(director will cut you off)

PentaScale and Chorale

PentaScale 2 3 4 5

Chorale

Dynamics (Volume)

- pp*-pianissimo (very soft)
- p* = piano (soft)
- mp*-mezzo piano (medium soft)
- mf*-mezzo forte (medium loud)
- f*-forte (loud)
- ff*-fortissimo (very loud)
- crescendo-(grow louder)
- decrescendo or diminuendo-(grow softer)

Musical Terms

- rit.*-ritardando (slowing down)
- fermata -hold note longer
(director will cut you off)

PentaScale and Chorale

PentaScale

Chorale

Dynamics (Volume)

- pp*-pianissimo (very soft)
- p* = piano (soft)
- mp*-mezzo piano (medium soft)
- mf*-mezzo forte (medium loud)
- f*-forte (loud)
- ff*-fortissimo (very loud)
- crescendo-(grow louder)
- decrescendo or diminuendo-(grow softer)

Musical Terms

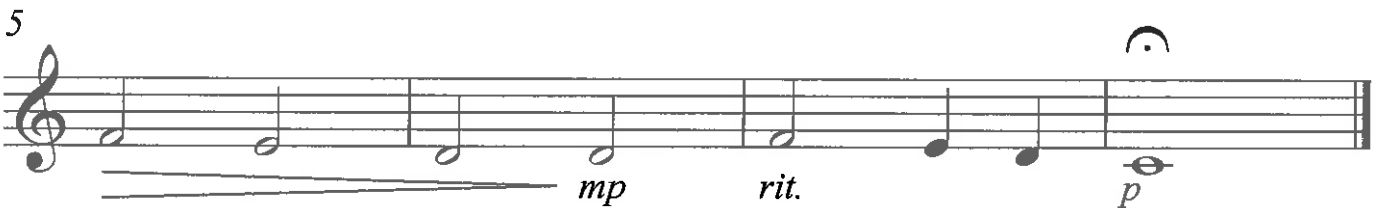
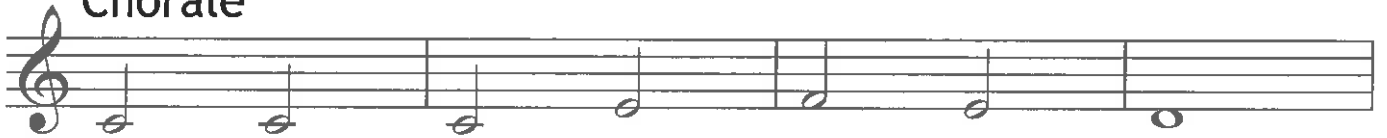
- rit.*-ritardando (slowing down)
- fermata -hold note longer
(director will cut you off)

PentaScale and Chorale

PentaScale



1 Chorale



Dynamics (Volume)

- pp*-pianissimo (very soft)
- p* = piano (soft)
- mp*-mezzo piano (medium soft)
- mf*-mezzo forte (medium loud)
- f*-forte (loud)
- ff*-fortissimo (very loud)

crescendo-(grow louder)

decrescendo or
diminuendo-(grow softer)

Musical Terms

- rit.*-ritardando (slowing down)
- fermata -hold note longer
(director will cut you off)

PentaScale and Chorale

PentaScale

2 3 4 5

1 Chorale

2 3 4


5 6 7 8

p *mp* *rit.* *f* *p*


Dynamics (Volume)

- pp*-pianissimo (very soft)
- p* = piano (soft)
- mp*-mezzo piano (medium soft)
- mf*-mezzo forte (medium loud)
- f*-forte (loud)
- ff*-fortissimo (very loud)

Musical Terms

- rit.*-ritardando (slowing down)
- fermata  -hold note longer
(director will cut you off)

crescendo-(grow louder) 

decrescendo or
diminuendo-(grow softer) 

PentaScale and Chorale

PentaScale 2 3 4 5

1 Chorale 2 3 4

5 6 7 8

Dynamics (Volume)*pp*-pianissimo (very soft)*p* = piano (soft)*mp*-mezzo piano (medium soft)*mf*-mezzo forte (medium loud)*f*-forte (loud)*ff*-fortissimo (very loud)

crescendo-(grow louder)

decrescendo or
diminuendo-(grow softer) **Musical Terms***rit.*-ritardando (slowing down)

fermata -hold note longer

(director will cut you off)

PentaScale and Chorale

PentaScale

2

3

4

5



Chorale

1

2

3

4

*p**f*

5

6

7

8 *mp**rit.**p***Dynamics (Volume)***pp*-pianissimo (very soft)*p* = piano (soft)*mp*-mezzo piano (medium soft)*mf*-mezzo forte (medium loud)*f*-forte (loud)*ff*-fortissimo (very loud)

crescendo-(grow louder)



decrescendo or

diminuendo-(grow softer)

**Musical Terms***rit.*-ritardando (slowing down)fermata  -hold note longer

(director will cut you off)

PentaScale and Chorale

PentaScale

2

3

4

5

Chorale

1

2

3

4

5

6

7

8

Dynamics (Volume)*pp*-pianissimo (very soft)*p* = piano (soft)*mp*-mezzo piano (medium soft)*mf*-mezzo forte (medium loud)*f*-forte (loud)*ff*-fortissimo (very loud)

crescendo-(grow louder)



decrescendo or

diminuendo-(grow softer)

**Musical Terms***rit.*-ritardando (slowing down)fermata  -hold note longer

(director will cut you off)

PentaScale and Chorale

PentaScale

2 3 4 5

Chorale

1 2 3 4

5 6 7 8

Dynamics (Volume)

- pp*-pianissimo (very soft)
- p* = piano (soft)
- mp*-mezzo piano (medium soft)
- mf*-mezzo forte (medium loud)
- f*-forte (loud)
- ff*-fortissimo (very loud)

crescendo-(grow louder)

decrescendo or
diminuendo-(grow softer)

Musical Terms

- rit.*-ritardando (slowing down)
- fermata -hold note longer
(director will cut you off)